

DYNAMIC CONE PRESSUREMETER



- Development of a tool
 - to assess **in-situ dynamic** soil properties
 - relevant for **foundations** of offshore wind turbines

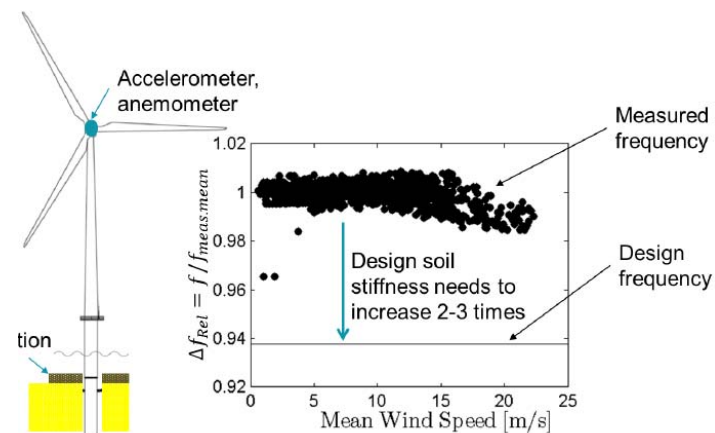
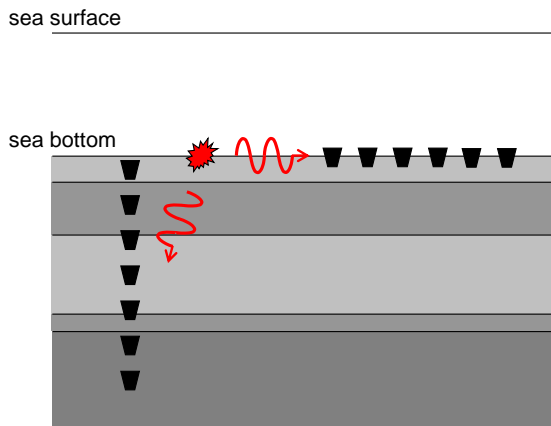


[<http://www.lankelma.co.uk/>, 2019]

- Project Leader: Karel van Dalen
(k.n.vandalen@tudelft.nl; www.tudelft.nl/knvandalen)



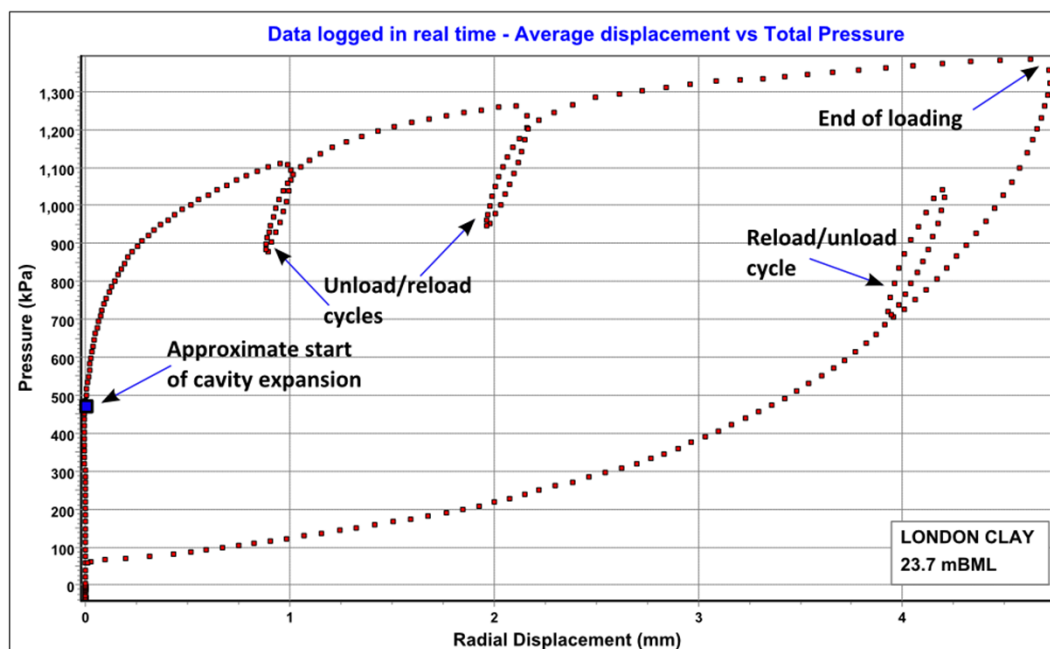
WHY? DISSTINCT PROJECT...



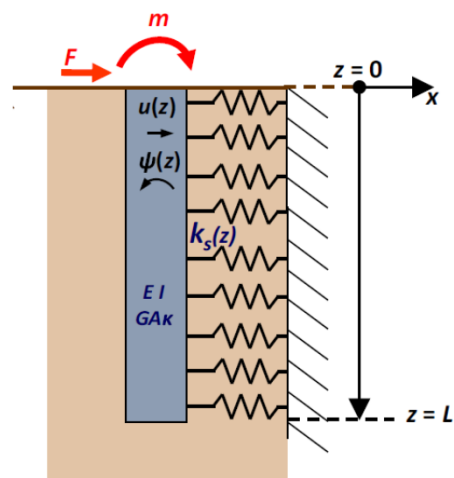
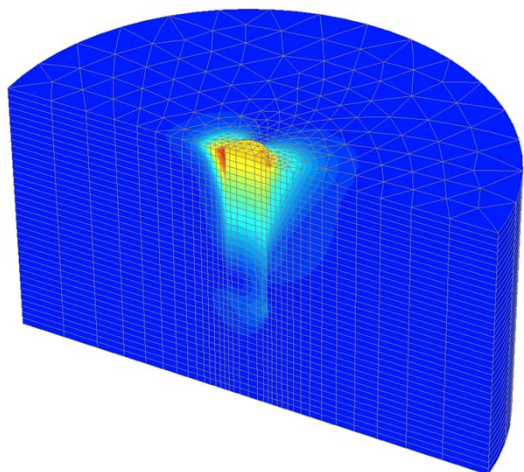
Kallehave D, LeBlanc Thilsted C and Linggaard M (2012) Modification of the API p-y Formulation of Initial Stiffness of Sand. Proceedings of the 7th International Conference on Offshore Site Investigation and Geotechnics, Society for Underwater Technology 2012.



DYNAMIC CONE PRESSUREMETER: WHAT?



DYNAMIC CONE PRESSUREMETER: USE?



DYNAMIC CONE PRESSUREMETER ??????



- Development of a tool
 - to assess **in-situ dynamic** soil properties
 - relevant for **foundations** of offshore wind turbines



- Project Leader: Karel van Dalen

