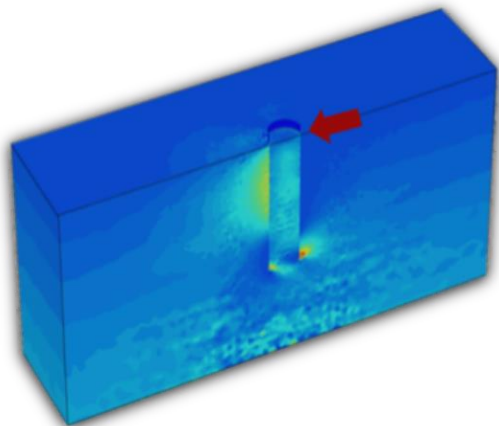


Deltares

- In offshore wind, approx. 80% of turbine foundations are Monopiles
- The installation of foundations accounts for 25% of the total costs
- Plausible reduction in cost of foundations possible

JIP SIMON: 2016-2018

- ➔ Quantification of pile installation effects (both impact driven and vibratory installed) using advanced numerical tool/analyses
- ➔ recommendations for pile installation techniques
- ➔ cost reduction in wind farm construction



Simulation of Installation of **MON**opiles (JIP **SIMON**)

Ahmed Elkadi

